

FAMILY OF THE MONTH

Krause Columbias From Montana



Alberta and Al Krause with one of their Champion rams.

The story of Krause Columbias begins in 1962. To understand how, I must go back a little ways. In 1952, Al, four children; Penny, Butch, Marjorie, Linda, and I, came to Lewistown and Lower Spring Creek to live with my father and mother on 160 acres that was to be their retirement place. We were to help with the ranch work and they would be free to travel. Tragedy struck less than two years later; my father was killed in a tractor accident and Al and I were left to run the place. By that time, Al found his lifetime love, selling farm machinery, a career that was to last until 1982.

For the first ten or twelve years, Penny would care for a string of milk cows and took care of them until she graduated from high school. As time went by the children joined 4-H and needed projects. So Butch traded his milk cows for Columbia sheep and we were hooked. We raised burn lambs, bought a few registered Columbias and grade sheep. As the years went by and the projects became more numerous, Butch and Marjorie had sheep and Penny and Linda had cows. When Penny and Butch graduated Linda and Marjorie took over, but then came the day when Linda, the youngest, graduated from high school and I began to sell each and every cow as they came fresh and at the end of the summer there were only sheep on the ranch.

You see, I had been raised in town and knew nothing about ranching or taking care of animals and I will admit to this day that I am afraid of cows and horses. I swear there were



Our flock of ewes with lambs.

cows that knew of my fear and went out of their way to remind me. So in 1969 I laid to rest "The Sheep and Cattle War" and we had a nice flock of 100 ewes, mostly registered Columbias.

Some of my fondest memories are of attending the many shows, fairs and sales with the children and showing the sheep. They were all good at fitting and showing and I was the "gator"!

In the past 15 years we have tried to build a flock from the best breeding in the west; I mention just a few, Butler, Hargrove, Ryan, Niven, Bradford, Platts, Snow, Colorado State University and Kelly. Upon this breeding of the ewe flock, we have, each year, purchased the best possible rams and have kept their outstanding ewes. During these years we have continued to show at fairs and major sales and have had our share of recognition for fleeces and sheep. We have promoted the sheep industry wherever possible with fitting schools, crafts, vests, and meat products. We have exported many ewes into Canada to start new flocks as well as selling to many 4-H and FFA members in Montana and adjoining states.

And now it is with a catch in my throat, that I say we are reducing our flock of ewes so that we can take a rest. The Columbias have been good to us and we have made so many great friends. Our four children are established with their families as it should be. As long as we are able, we shall promote the Columbia breed and the sheep industry.

Alberta Krause

1979

Montana Columbia Show & Sale



Baker of Richfield, Idaho.

Bob Peterson, Columbia breeder from Livingston took top honors in the pair of registered ewe class, selling the reserve champions for \$1,250 for the pair. Jill Henricks of Marion was the purchaser. The champion pair of ewes, consigned by Darlington, sold for \$1,100 for the pair.

The Columbia sale is held annually in Lewistown and is preceded by a business meeting the night before the sale. A social hour was hosted by the Central Montana PCA. Tom Grimes of Cascade continues to serve as president with Gordon Darlington the representative of the state association to the National Columbia Breeders. Pete Knutson of Clyde Park handles the chores of auctioneer.

Mel Lynch of Gillette, Wyoming was judge for the show which is held prior to the sale. Lynch said all the rams entered looked real well. Lynch said what he looks for is uniformity of fleece, length and size.

Al Krause of Lewistown is shown with his Grand Champion ram at the Montana Columbia Show and Sale in Lewistown. The reserve champion ram was

shown by Gordon Darlington of Three Forks. Brenda Johnson of Kalispell, 3rd from left proved to have the top selling ram at the sale. That ram went for \$1,750.

The Montana Columbia Show and Sale held September 22 in Lewistown was a record setter according to T.W. Grimes, Cascade, President of the Montana Columbia Sheep Breeders. Grimes noted that the sale attracted a large number of buyers and that the averages for ewes and rams was highest in the history. Sale Manager, Ruth Lewis of Bozeman said that indicates a interest in the sheep business and the Columbia breed.

field, Idaho. The reserve champion ram, shown by Gordon Darlington of Three Forks sold for \$1,050. Darlington sold the campion ewe for \$725 to Gerald

Mrs. Lewis said the average for single ewes was \$424. The average for the registered rams was \$705. Nine pairs of ewes brought an average of \$824 or \$412 for each ewe. The range rams consigned averaged \$344 per head.

President Grimes said the top selling ram was consigned by Brenda Johnson of Kalispell and sold for \$1,750 to Sandra Miller of Harlem. The Johnson ram placed third earlier in the day during the judging competition.

The champion ram, shown by Al Krause of Lewistown sold for \$1,325 to Gerald Baker of Rich-



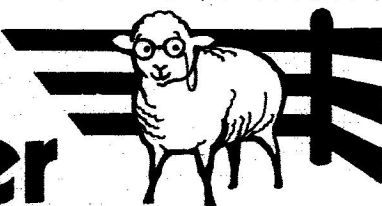
The Grand Champion ewe was shown by Gordon Darlington of Three Forks. Bill Denecke of Manhattan showed the reserve champion ewe. Third place ewe was shown by Guy Sowers of

Chinook-Fromberg. Fourth place ewe is shown by Guylyn Warren of Willow Creek. Pictured to the right is Rick Bauwens of Fromberg.



Phone 994-3414

Kott's Korner



—Rodney Kott, Extension Sheep Specialist, M.S.U.

1982-1983 MONTANA CENTRAL RAM TEST

Montana's second annual Central Ram Test was completed by 99 Targhee, 34 Rambouillet, 26 Columbia and 21 Polypay rams. The 120-day test—Oct. 23, 1982 through Feb. 19, 1983—was preceded by a 14-day adjustment period. While on the test, the rams were self-fed a commercially prepared pellet containing approximately 80 percent alfalfa, 16 percent barley and 5 percent molasses. Average daily gains were calculated from an average of two weights taken on consecutive days at the beginning and end of the test. All rams were sheared at the beginning and at the end of the test. Wool data was collected only from wool grown while the rams were on test and was adjusted to a yearly basis. The rams' clean fleece weight was adjusted for initial test weight.

Test results were announced at the March 5th field day held at MSU. The rams gained an average of .68 pounds per day, and on a yearly basis, produced an average of 7.8 pounds of clean wool and had an average staple length of 4.68 inches. This compares to an average daily gain of .71, a clean fleece weight of 8.1 and a staple length of 4.5 for last year's test. The difference in the two year's test averages is probably a result of a change in the percentage of breeds represented.

Within-breed ratios were calculated for average daily gain and adjusted clean fleece weight ratios, in each breed, were recognized during the field day. In order to qualify for these

awards, the rams must meet specific criteria outlined by the producers of that respective breed.

The top gaining ram in the test was a Targhee consigned by Chase Hibbard of the Sieben Livestock Co., with a daily gain of .96 pounds. The Targhee ram, with the highest adjusted clean fleece was entered by Larry Arnold of Arnold Green Meadow Ranch. A ram consigned by Tom and John Helle of Dillon gained .77 pounds per day to post the top ratio for Rambouillets in both gain and wool categories. Al Krause, of Krause's Columbias, Lewistown, consigned a ram that gained an average of .92 pounds per day, best for that breed. The high fleece index for Columbias went to Dorothy Denecke, Denecke Ranch Co., Manhattan. Petersons' Polypays of Sidney

took both index honors for Polypay rams, with one gaining an average of .73 pounds per day. The accompanying table shows the rams within each breed that have ratios above average - 100 - for both gain and clean fleece weight and meet the criteria designed by breed representatives for each breed. Also, breed averages and test averages are listed for a number of the traits measured.

Five Targhee, one Rambouillet, one Columbia and one Polypay ram qualified to be sold as singles at the Montana Wool Growers Association's ram sale at Miles City in September. Also, many of the other rams on test will be part of individual breeder consignments to the Miles City sale.

Dr. Wes Kezar, Ag Experiment Station, Montana State University, and myself, supervisors of the test, feel that quite an extensive amount of information was collected on each ram, and that buyers should make selections based on their own production and genetic need. A complete listing of the data from the ram test can be obtained by contacting either Kezar, Wool Lab, MSU, or myself, 221 Linfield Hall, MSU, Bozeman, Montana 59717.



Al Krause of Krause Columbias, Lewistown, consigned a ram that gained an average of .92 pound daily, best for the breed. The high fleece index for Columbias went to Dorothy Denecke of Denecke Ranch Co., Manhattan.

Petersen Polypays of Sidney took both trait index honors for Polypay rams, with one gaining an average of .73 pound per day.

Kott said the 180 rams averaged a daily gain of .68 pound per day, slightly less than the previous year's gain average—possibly because of a change in the percentages of breeds represented. The average wool gains on a

yearly basis, were 7.8 pounds and 4.64 inches of staple length.

The 99 Targhee rams tested averaged .71 pound daily gain, and 7.8 pounds of clean wool and 4.65 inches of staple length of a yearly basis.

The gains for 34 Rambouillets were .6 pound daily gain, 7.7 pounds clean wool and 4.5 inches staple length.

For 26 Columbia rams the respective averages were 7.4 pounds daily gain, 7.8 pounds of wool and 4.8 inches staple length.

Twenty-one Polypay rams averaged .55 pound daily gain, 7.7 pounds wool and 4.7 inches of staple length.



Krause Columbias, Al Krause, Top Columbia Gaining Ram



Leonard Grove, Judith Gap; Rodney Kott, MSU; H. D. Fulker, Manhattan; R.S. Lowis, Belgrade; Kevin McGivern, Billings; Larry Capser, Harlowton, are looking over the rams on test. The top performers will be sold in Miles City, Sept. 15 at the Montana Ram Sale.

ASPC Briefs

SOUTHEAST LAMB MARKET DEVELOPMENT—Major impetus to increased southeast lamb sales resulted recently from Big Star, 87-store Atlanta-based branch of Grand Union. Big Star just directed all 87 stores to carry lamb in every store, every week. Big Star will also advertise lamb 52 weeks per year in Atlanta Journal-Constitution, plus run monthly specials. Previously, chain sold lamb only a few times per year. Initial volume will be 8-10,000 pounds weekly. ASPC lamb team first discussed southeastern market possibilities with Grand Union last fall.

PRODUCER LOCAL LAMB SALES ESTIMATED—Recent ASPC telephone survey of producers estimates total industry 1982 lamb sales at approximately 100,000 or 1.5 percent of 6.7 million total slaughter.

PLANT OPENS—Lamb slaughter facility opened in Iowa. First kill at Hawarden, Iowa, of lamb was April 25. Plant was converted from beef to lamb. Start up of 1500 head per day, moving up to 3000.

Directors Meeting

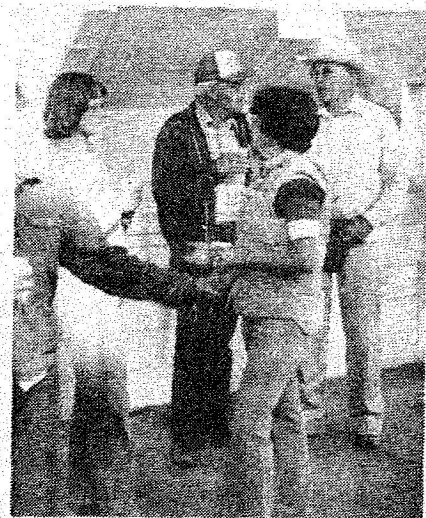
The Montana Wool Growers Board of Directors will meet in Great Falls, June 4th at 10 a.m. at the Heritage Inn. The meeting is open to any member who may have business with the board or wishes to ask questions concerning the organization. The MWGA Ram Sale committee will meet at the same place at approximately 4 p.m. to act on the 1983 Ram Sale entry requests.

John Paugh, Pres.

Sale In Pictures



Marilyn Darlinton of Three Forks and Lu Ann Peterson of Livingston are in good spirits. Bob Peterson of Livingston is talking



Susan Quist of Clyde Park visits with Guylyn Warren of Willow Creek while Al Krause of Lewistown talks with Colgate Robinson of Saco during the 1979 Ram Sale.

1993 Hall of Fame Recipients

Al and Alberta Krause

The Krauses were introduced to Columbia sheep in about 1962 when their son Butch started a 4-H and FFA sheep project with a small herd of mostly Earl Butler breeding. A couple of years later the flock increased considerably in size when they visited the Hargrove's intending to purchase a new ram, but instead came home with Claude's ewes. The Krauses were now a little more into the Columbia business. But to be successful in the sheep business you need a good ram. This brings us to "Snowball", the most memorable of their stud rams. Named for the Snow breeding he carried, Snowball was purchased from Earl Butler at the Winter Fair in Bozeman. Now they had a good ram, all they needed was a way to haul him home. Well I'll bet you didn't know that if you take the back seat out of your car there is room for a sheep back there and thats how Snowball got home.

In the 1970's after their son and daughters finished school and moved away the Krauses continued raising and showing Columbias. They attended and consigned to many shows and sales in Montana and across the country including the Montana Ram Sale, the Montana Columbia show and sale and several trips to the National Columbia show and sale.

Aside from tending their own flock the Krauses helped many 4-H and FFA members and new breeders get started in the sheep business. They helped sustain the sheep show at the local fair bringing sheep and wool to exhibit but always had time to help a beginner. They showed kids how to fit, show and judge sheep. They promoted sheep to the public not just Columbias but the sheep industry as a whole.

Al and Alberta have sold all of their sheep and retired from the sheep business. And tonight we would like to show our appreciation for all they have done for the Montana Columbia Sheep Breeders Association and the Columbia breed by including them in the Hall of Fame.



Al and Alberta Krause of Lewistown were honored by the Montana Columbia Sheep Association at the organization's annual meeting in Lewistown held during the Montana Columbia Show and Sale. The two longtime sheep producers and sheep promoters were inducted into the Columbia Hall of Fame. The presentation was made by Doug Hitch of Hobson.

The Krauses were introduced to Columbia sheep in about 1962 when their son Butch started a 4-H and FFA sheep project with a small herd of mostly Earl Butler breeding. A couple of years later the flock increased considerably in size when they visited the Hargroves intending to purchase a new ram, but instead came home with Claude's ewes. The Krauses were now a little more into the Columbia business. But to be successful in the sheep business you need a good ram. This brings us to "Snowball", the most memorable of their stud rams. Named for the Snow breeding he carried, Snowball was purchased from Earl Butler at the Winter Fair in Bozeman. Now they had a good ram, all they needed was a way to haul him home. Well, if you take the back seat out of your car there is room for a sheep back there, and that's

how Snowball got home.

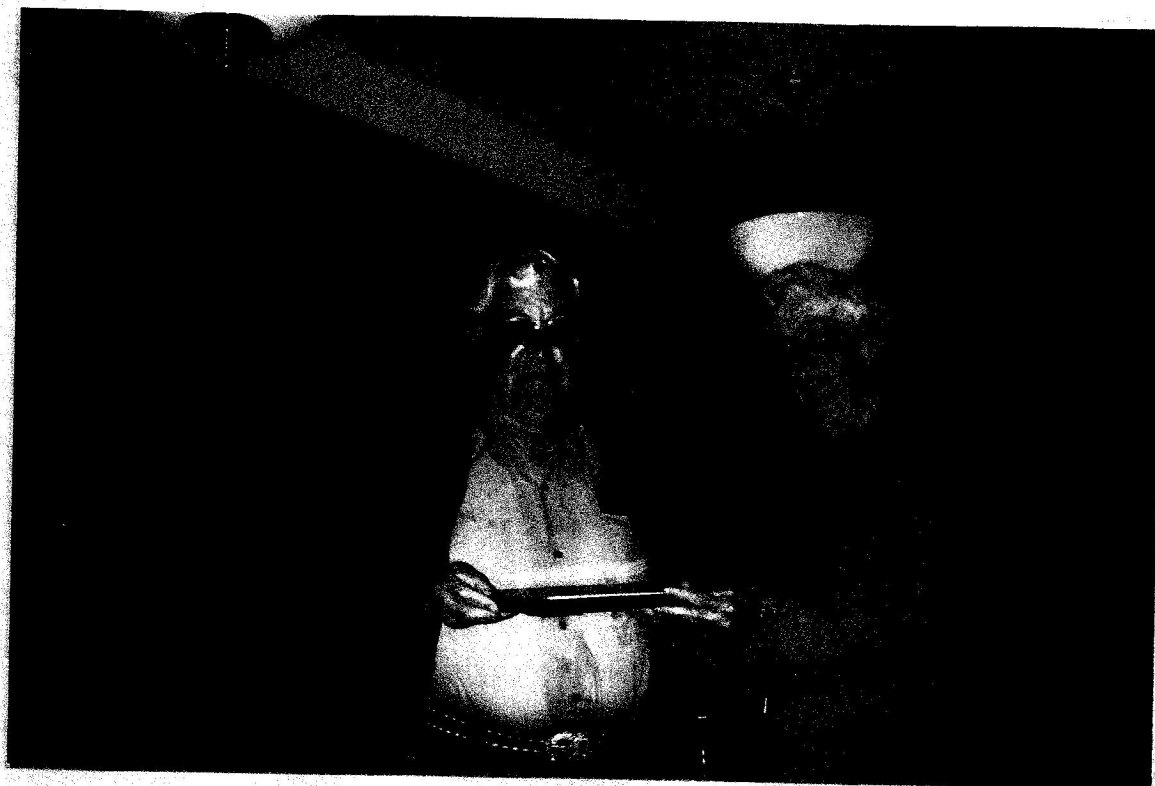
In the 1970's after their son and daughters finished school and moved away, the Krauses continued raising and showing Columbias. They attended and consigned to many shows and sales in Montana and across the country including the Montana Ram Sale, the Montana Columbia Show and Sale and several trips to the National Columbia Show and Sale.

Aside from tending their own flock, the Krauses helped many 4-H and FFA members and new breeders get started in the sheep business. They helped sustain the sheep show at the local fair bringing sheep and wool to exhibit but always had time to help a beginner. They showed kids how to fit, show and judge sheep. They promoted sheep to the public, not just Columbias but the sheep industry as a whole.

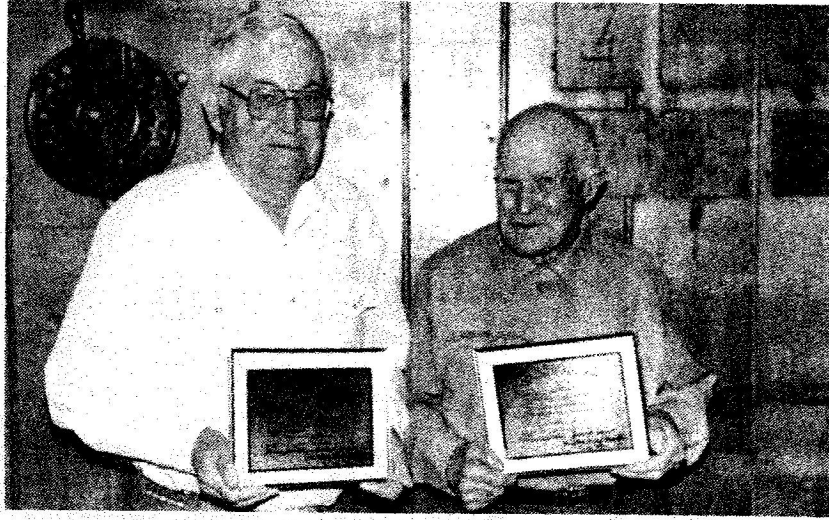
Al and Alberta have sold all their sheep and retired from the sheep business.



1993



1994



◀ The Snowy Mountain Wool Pool has a tradition of honoring longtime sheep producers who are involved with the pool at its annual meeting. On the right is Al Krause. He and his wife Alberta have been members of the pool since it started and are longtime Columbia sheep breeders. Also pictured is Don McMillan who has served the Snowy Mountain Wool Pool for many years. The Bar 69 Club served an excellent lamb dinner for the banquet, including racks of lamb.