

Hi Bret,
I would appreciate if you could review your estimate.
I will enclose a few pictures for your review.



The above picture represents prior to damage.



The above picture when water on carpet. 2 drawers are removed from stereo center.



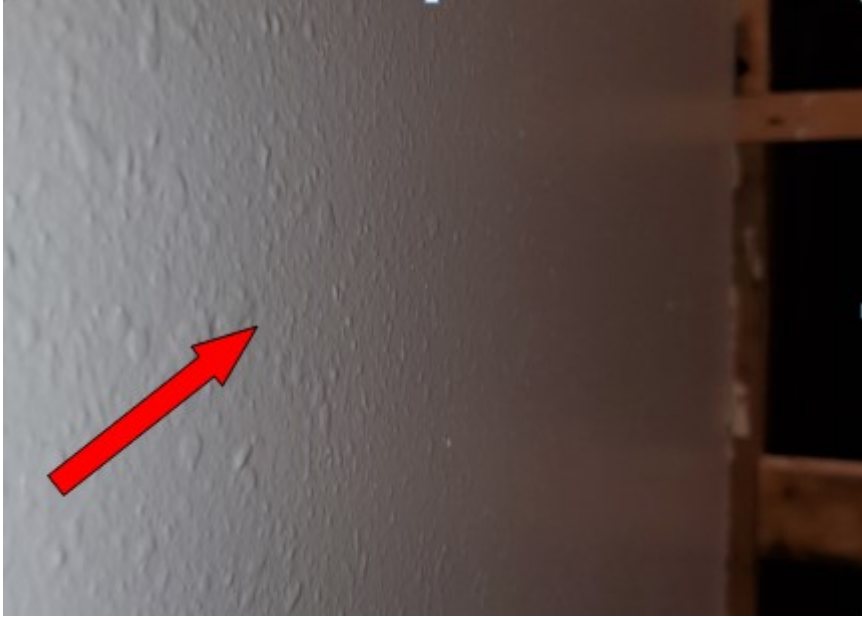
Above picture showing stereo cabinet 30Dx62Wx29H 3/4" PLY top and shelf with hardwood front, Back and sides were 5/8" oak PLY. Area behind the drawers was not stained. The area above the drawers is stained and sealed to a gloss. The whole unit was built and then put in place. The metal drawer slides are for 24 inch extra deep drawers. I don't believe there is enough material and labor in the estimate to cover replacing the stereo unit back to original. Please advise.



Sheetrock is not a big expense but it will take 80sf to cover the room.



They pulled all the insulation from behind the fireplace. It will take about 116 feet of somekind of doublesided 3 1/2 insulation. JM label on the insulation. (It has a poly film on interior wall side and another film against the concrete) Service Master pulled the insulation from behind the fireplace including insulation in the wall cavity behind the sheetrock which will need 20sf of sheetrock to remove and reinsulate.



The wall texture is a medium splatter. I do not see a line item for wall texture.



Insulation showing. I don't see a line item for insulation. Please advise.



Service Master threw out the door trim and I don't see a line item for to replace. Please advise.